

Burnishing machine and pipe belt sander TRINOXFLEX Set

BSE 14-3 INOX Set

Order number 433.454



Burnishing machine and pipe belt sander TRINOXFLEX Set

- + Microprocessor control: speed selection, tachogenerator constant speed control, soft start, restart protection after power failure, overload protection and temperature monitoring
- + Unique tool attachment with quick-action coupling for tool-free changing of the system attachments for burnishing and pipe belt sanding
- + Variably adjustable burnishing attachment, allows working close up to the edge, also suitable for narrow rollers, incl. edge guide. Tool-free grinding tool change via patented quick-change system
- + Completely cast electronic components prevents damage due to metal dust. The 3-fold winding protection reduces motor wear, increases service life
- + Sanding belt dimension: 760 x 40 mm
- + High-quality, spring-mounted sanding arm: light alloy with 2 deflection rollers. For optimum wrap-round on pipes, up to max. 270°
- + Sanding belt replacement: quick and tool-free
- + Spindle lock
- + Adjustable guard: for sanding tools up to Ø 125 mm
- + For optimum finishing of various materials, for burnishing, texturing, polishing, brushing, smoothing, de-rusting and deburring steel and stainless steel surfaces

Technical attributes

Power input	1400 watt
Power output	880 watt
Max. tool Ø	125 mm
Tool width	100 mm
Tool fixture	19 mm
Belt speed	3,5-10 m/sec
Belt dimensions	760 x 40 mm
Pipe Ø max.	125 mm
No load speed	1000-3500 rpm
Cable length	4,0 m
Size (W x L x H)	320 x 210 x 195 mm
Weight	3,6 kg

Standard equipment

1 sanding attachment, pipe belt BR 125	433.470
1 sanding attachment for burnishing BS 100	433.462
1 rubber air roller	433.896
1 air pump	256.284
1 sanding-polishing belt S 600	326.917
1 superfinishing band S 1500	326.933
1 sanding belt MESHFLEX A 240	1 piece of 326.879
1 sanding belt MESHFLEX A 400	1 piece of 326.852
5 sanding belts CORUFLEX P 80	5 pieces of 326.739
5 sanding belts CORUFLEX P 120	5 pieces of 326.755

FLEX-Elektrowerkzeuge GmbH
Bahnhofstraße 15
71711 Steinheim
Phone +49 7144 828-0
Fax +49 7144 25899
info@flex-tools.com
www.flex-tools.com

FLEX

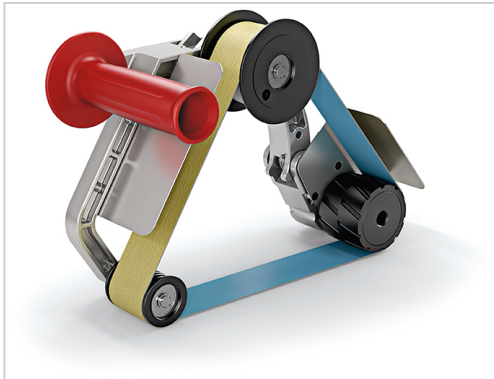
5 sanding belts CORUFLEX P 240

5 sanding belts CORUFLEX P 240	5 pieces of 434.914
1 carrying case L-BOXX® 238	414.093
1 case insert	433.918

Accessories

Sanding attachment, pipe belt

Order number 433.470



Technical attributes

QTY/PKG	1
---------	---

Sanding attachment for pipe belt sanding. For the TRINOXFLEX. Tool-free fitting via the quick-change system. Variably adjustable attachment.

Sanding attachment, brushing

Order number 461.555



Technical attributes

QTY/PKG	1
---------	---

Grinding & brushing attachment for the TRINOXFLEX. With removable protective hood and suction connection \varnothing 32 mm for low-dust work. Including guide stop and vibration-damped ergonomic handle. Tool-free change of grinding tool via a patented quick-change system

Accessories

Extraction hood

Order number 461.547



Extraction hood for the BSE 14-3 100 with extraction connection (D32 clip) for rollers and brushes with max. Ø 110 mm.

Technical attributes

QTY/PKG	1
---------	---

Sanding attachment, burnishing

Order number 433.462



Sanding attachment with integrated handle for burnishing. For the TRINOXFLEX. Tool-free fitting via the quick-change system.

Technical attributes

QTY/PKG	1
---------	---

Rubber air roller

Order number 433.896



For sensitive contour sanding.

Technical attributes

Dimensions in mm	100 Ø x 100
QTY/PKG	1

Accessories

Expansion roller

Order number 433.926



Technical attributes

Dimensions in mm	100 Ø x 100
QTY/PKG	1

For using sanding/polishing sleeves. These are simply pushed over the rubber holder and held securely in place by centrifugal force.

Air pump

Order number 256.284



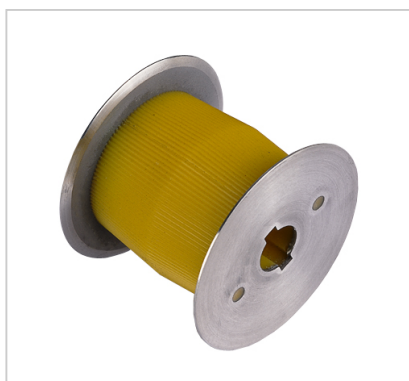
Technical attributes

QTY/PKG	1
---------	---

For pumping up rubber air rollers.

Drive roller

Order number 303.054



Technical attributes

Dimensions in mm	62 Ø x 70
QTY/PKG	1

With stainless steel guide discs. Needed is the distance ring set (Order no. 250.522).

Accessories

Poli-clean

Order number 257.375



Hard-structured fleece wheel. For cleaning welds and intensive, pore-deep removal of rust and oxidation layers.

Technical attributes

Dimensions in mm	100 Ø x 100
Grit	extra coarse
QTY/PKG	1

Flap wheel sanding



Technical attributes

Dimensions in mm	Grit	QTY/PKG	Order number
100 Ø x 50	P 40	1	250.496
100 Ø x 50	P 60	1	250.498
100 Ø x 50	P 80	1	250.499
100 Ø x 50	P 120	1	250.501
100 Ø x 50	P 180	1	250.504
100 Ø x 50	P 240	1	250.505
100 Ø x 100	P 40	1	358.827
100 Ø x 100	P 60	1	358.835
100 Ø x 100	P 80	1	358.843
100 Ø x 100	P 120	1	358.851
100 Ø x 100	P 180	1	358.878
100 Ø x 100	P 240	1	358.886

Flexible sanding wheel with individual flexible flap-type sanding lamellae and keyway. For paint removal, sanding and strong graining applications. Removes scratches, rust, old paint, scale and burrs. The 40 grit employed enables the removal of even deep scratches on stainless steel.

Accessories

Sanding fleece



Flexible fleece roller made of sanding grit-impregnated nylon web with a keyway. Achieves effective surface finishes on stainless steel, copper, aluminum, brass, etc. Also ideal for cleaning oxidized coatings and smoothing plastic and wood.

Technical attributes

Dimensions in mm	Grit	QTY/PKG	Order number
100 Ø x 100	A 80	1	377.910
100 Ø x 100	A 180	1	377.929
100 Ø x 100	A 280	1	377.937

Sanding fleece



Flexible fleece roller made of sanding grit-impregnated nylon web with a keyway. Achieves effective surface finishes on stainless steel, copper, aluminum, brass, etc. Also ideal for cleaning oxidized coatings and smoothing plastic and wood.

Technical attributes

Dimensions in mm	Grit	QTY/PKG	Order number
100 Ø x 50	A 80	1	250.509
100 Ø x 50	A 160	1	250.510
100 Ø x 50	A 280	1	250.512
100 Ø x 50	A 400	1	250.513
100 Ø x 100	A 80	1	256.973
100 Ø x 100	A 160	1	256.974
100 Ø x 100	A 280	1	256.975
100 Ø x 100	A 400	1	256.976

Accessories

Sanding fleece flap



Technical attributes

Dimensions in mm	Grit	QTY/PKG	Order number
100 Ø x 50	P 80/A 160	1	250.515
100 Ø x 50	P 150/A 280	1	250.516
100 Ø x 50	P 240/A 280	1	358.894
100 Ø x 100	P 80/A 160	1	256.977
100 Ø x 100	P 150/A 280	1	256.978
100 Ø x 100	P 240/A 280	1	358.908

Flexible combination of sanding flap and sanding fleece. Suitable for dulling and finishing. Removes small scratches on metal, hard plastics and wood.

Grinding fleece, folded



Technical attributes

Dimensions in mm	Grit	QTY/PKG	Order number
100 Ø x 100	A 100	1	347.272
100 Ø x 100	A 180	1	347.280
100 Ø x 100	A 280	1	347.299

Flexible polishing wheel with multiple-folded grinding fleece for practically ridge-free grinding stainless steel, copper, aluminium, brass, etc.

Accessories

Fine polishing roller



Soft rubber polishing wheel made of grit-impregnated rubber web. For particularly bright longitudinal structures. Best effects are achieved on stainless steel.

Technical attributes

Dimensions in mm	Grit	QTY/PKG	Order number
100 Ø x 50	K 60	1	250.525
100 Ø x 50	K 180	1	250.526

Stainless steel wire brush

Order number 251.625



Flexible stainless steel wire brush. Rust removal, deburring, roughing and paint removal. Needed is one piece plus distance ring set (Order no. 250.522).

Technical attributes

Dimensions in mm	100 Ø x 70
QTY/PKG	1

Accessories

Stranded wire brush

Order number 251.626



Technical attributes	
Dimensions in mm	100 Ø x 70
QTY/PKG	1

Made of strong, twisted, gold-colored steel wire. Extremely tough and rigid. For rust removal, deburring, removing dirt and old paint. Brings up the grain structure in wood. Needed is one piece plus distance ring set (order no. 250.522).

Polishing felt

Order number 257.374



Technical attributes	
Dimensions in mm	100 Ø x 50
QTY/PKG	1

Soft, flexible felt polishing wheel. For high-gloss polishing when using polishing pastes and creams.

Accessories

Cotton buffing wheel

Order number 317.950



Technical attributes

Dimensions in mm	100 Ø x 10
QTY/PKG	8

Polishing ring made of impregnated cotton cloth. Achieves a high-gloss polished finish on aluminum, brass and stainless steel. Needed are 8 pieces plus distance ring set (order no. 250.522).

Sanding-polishing sleeve



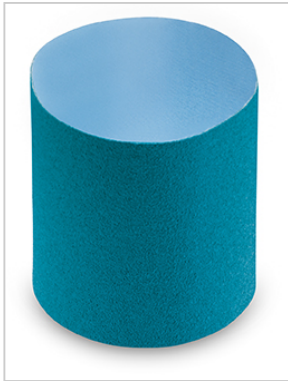
Technical attributes

Dimensions in mm	Grit	QTY/PKG	Order number
100 Ø x 100	S 600	1	436.429
100 Ø x 100	S 1500	1	436.437

For high-gloss polishing without polishing agents in two steps.

Accessories

Sanding sleeve ZIRCOFLEX

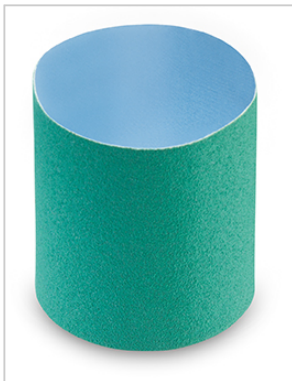


Sanding sleeve with high-quality, self-sharpening zirconium corundum for a longer service life. High abrasion performance in coarse and intermediate sanding on steel and stainless steel surfaces.

Technical attributes

Dimensions in mm	Grit	QTY/PKG	Order number
100 Ø x 100	P 60	5	434.507
100 Ø x 100	P 80	5	434.515
100 Ø x 100	P 120	5	434.523

Sanding sleeve CERAFLEX



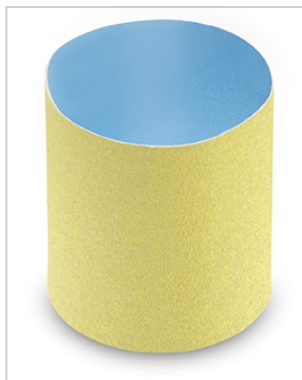
Flexible high-performance sanding sleeve for optimum sanding performance, with high abrasion performance and an extremely long service life thanks to self-sharpening, micro-crystalline ceramic grit for preliminary and intermediate sanding on stainless steel surfaces. Cool sanding thanks to additional multi-bonding.

Technical attributes

Dimensions in mm	Grit	QTY/PKG	Order number
100 Ø x 100	60	5	434.531
100 Ø x 100	80	5	434.558
100 Ø x 100	120	5	434.566

Accessories

Sanding sleeve CORUFLEX



Technical attributes

Dimensions in mm	Grit	QTY/PKG	Order number
100 Ø x 100	P 180	5	434.574
100 Ø x 100	P 240	5	434.582

Highly flexible sanding sleeve with annealed corundum grit and active-sanding agents for finishing stainless steel. Particularly suitable for finish sanding.

Sanding sleeve MESHFLEX

Order number 434.590



Technical attributes

Dimensions in mm	100 Ø x 100
Grit	A 100
QTY/PKG	1

For removing minor damage, scratches, tarnish, flash rust, scale and dirt. Removing tarnish at welds without heat distortion at thin plates. For grinding, cleaning and finishing stainless steel, steel, titanium alloys, light metals, non-ferrous metals and plastics.

Accessories

Sanding sleeve MESHFLEX

Order number 434.604



Technical attributes	
Dimensions in mm	100 Ø x 100
Grit	A 240
QTY/PKG	1

For removing minor damage, scratches, tarnish, flash rust, scale and dirt. Removing tarnish at welds without heat distortion at thin plates. For grinding, cleaning and finishing stainless steel, steel, titanium alloys, light metals, non-ferrous metals and plastics.

Sanding sleeve MESHFLEX

Order number 434.612



Technical attributes	
Dimensions in mm	100 Ø x 100
Grit	A 400
QTY/PKG	1

For removing minor damage, scratches, tarnish, flash rust, scale and dirt. Removing tarnish at welds without heat distortion at thin plates. For grinding, cleaning and finishing stainless steel, steel, titanium alloys, light metals, non-ferrous metals and plastics.

Accessories

Velcro sanding belt

Order number 284.718



Technical attributes	
Dimensions in mm	600 x 40
Grit	P 60
QTY/PKG	10

For polishing pipes and pipe fittings. The drive roller RA 62x70 INOX 303.054 is needed.

Velcro sanding belt

Order number 284.726



Technical attributes	
Dimensions in mm	600 x 40
Grit	P 120
QTY/PKG	10

For polishing pipes and pipe fittings. The drive roller RA 62x70 INOX 303.054 is needed.

Velcro fleece

Order number 281.069



Technical attributes	
Dimensions in mm	600 x 40
Grit	A 100
QTY/PKG	2

For polishing pipes and pipe fittings. The drive roller RA 62x70 INOX 303.054 is needed.

Accessories

Velcro fleece

Order number 281.077



Technical attributes	
Dimensions in mm	600 x 40
Grit	A 180
QTY/PKG	2

For polishing pipes and pipe fittings. The drive roller RA 62x70 INOX 303.054 is needed.

Velcro fleece

Order number 281.085



Technical attributes	
Dimensions in mm	600 x 40
Grit	S 400
QTY/PKG	2

For polishing pipes and pipe fittings. The drive roller RA 62x70 INOX 303.054 is needed.

Superfinishing band

Order number 318.736



Technical attributes	
Dimensions in mm	600 x 40
Grit	S 1500
QTY/PKG	2

For high-gloss polishing of stainless steel. The drive roller RA 62x70 INOX 303.054 is needed.

Accessories

Velcro drive belt, blue

Order number 281.050



Technical attributes	
Dimensions in mm	700 x 30
QTY/PKG	2

For closing and releasing the different belts. Simple application - tensile resistance up to 100 kg. The drive roller RA 62x70 INOX 303.054 is needed.

Adhesive tape for sanding belt

Order number 251.838



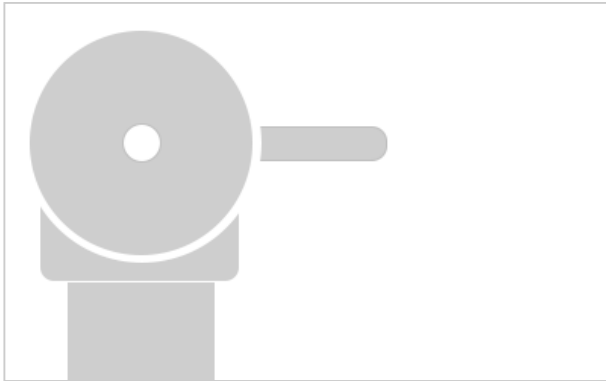
Technical attributes	
Dimensions in mm	40 x 5000
QTY/PKG	1

For sealing open sanding belts. The drive roller RA 62x70 INOX 303.054 is needed.

Accessories

Case insert

Order number 433.918



Matching insert for BSE/BRE/BSE INOX 14-3 for carry case L-BOXX® 238.

Technical attributes

QTY/PKG	1
---------	---

Carrying case L-BOXX®

Order number 414.093



Technical attributes

External dimensions L x W x H	442 x 357 x 253 mm
Internal dimensions L x W x H	378 x 306 x 209 mm
Weight	2,8 kg
QTY/PKG	1

The robust storage and transport system L-BOXX® made of impact-resistant plastic conveys tools, accessories and consumables easily and comfortably to the place of use. Elaborate inserts provide order and clarity, ergonomically shaped handles and additional moulded recesses for flexible and comfortable handling. The unbeatably simple connection and disconnection of the different L-BOXXes optimises combined transportation. Fits the TÜV-tested in-vehicle equipment system from Sortimo perfectly and without adapters. Load capacity per L-BOXX® up to 25 kg, combined transportation up to 40 kg, the cover can be loaded up to 100 kg. Splash-proof. Without insert.

Accessories

Sanding belt ZIRCOFLEX



Sanding belt with high-quality, self-sharpening zirconium corundum for a longer service life. High abrasion performance in coarse and intermediate sanding on steel and stainless steel surfaces.

Technical attributes

Dimensions in mm	Grit	QTY/PKG	Order number
760 x 40	P 36	10	438.464
760 x 40	P 40	10	438.472
760 x 40	P 60	10	438.480
760 x 40	P 80	10	438.499
760 x 40	P 120	10	438.502

Sanding belt CERAFLEX

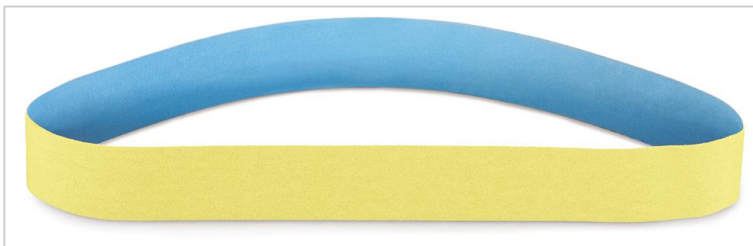


Flexible high-performance sanding belt for optimum sanding performance, with high abrasion performance and an extremely long service life thanks to self-sharpening, micro-crystalline ceramic grit for preliminary and intermediate sanding on stainless steel surfaces. Cool sanding thanks to additional multi-bonding.

Technical attributes

Dimensions in mm	Grit	QTY/PKG	Order number
760 x 40	60	10	438.510
760 x 40	80	10	438.529
760 x 40	120	10	438.537

Sanding belt CORUFLEX



Highly flexible sanding belt with annealed corundum grit and active-sanding agents for finishing stainless steel. Particularly suitable for finish sanding.

Technical attributes

Dimensions in mm	Grit	QTY/PKG	Order number
760 x 40	P 80	10	326.739
760 x 40	P 120	10	326.755
760 x 40	P 180	10	434.906
760 x 40	P 240	10	434.914

Accessories

Sanding belt MESHFLEX



Technical attributes

Dimensions in mm	Grit	QTY/PKG	Order number
760 x 40	A 100	3	326.895
760 x 40	A 240	3	326.879
760 x 40	A 400	3	326.852

For removing minor damage, scratches, tarnish, flash rust, scale and dirt. Removing tarnish at welds without heat distortion at thin plates. For grinding, cleaning and finishing stainless steel, steel, titanium alloys, light metals, non-ferrous metals and plastics.

Superfinishing band



Technical attributes

Dimensions in mm	Grit	QTY/PKG	Order number
760 x 40	S 600	1	326.917
760 x 40	S 1500	1	326.933

For high-gloss polishing without polishing agents in two steps.

FLEX-Elektrowerkzeuge GmbH
Bahnhofstraße 15
71711 Steinheim
Phone +49 7144 828-0
Fax +49 7144 25899
info@flex-tools.com
www.flex-tools.com

FLEX

Accessories

Distance ring set

Order number 250.522



Technical attributes

QTY/PKG

6

Required for nylon brushes, stainless steel wire brushes, stranded wire brushes, cotton buffing wheels. Also necessary for sanding flaps, sanding fleeces, sanding fleece flaps, fine sanding rollers and sanding wheels less than 100 mm wide if only one sanding wheel is to be mounted.