

## 2100 watt angle grinder, 180 mm

**L 21-8 180**

**Order number 392.782**



### Technical attributes

|                    |                       |
|--------------------|-----------------------|
| Max. disc diameter | 180 mm                |
| No load speed      | 8300 rpm              |
| Power input        | 2100 watt             |
| Power output       | 1250 watt             |
| Tool fixture       | M 14                  |
| Clamping collar Ø  | 64 mm                 |
| Cable length       | 4,0 m                 |
| Size (W x L x H)   | 495 x 101 x<br>135 mm |
| Weight             | 5,2 kg                |

### Standard equipment

|                        |         |
|------------------------|---------|
| 1 guard grinding 180 Ø | 416.517 |
| 1 SoftVib handle       | 325.384 |
| 1 clamping flange      | 338.753 |
| 1 clamping nut M14     | 100.080 |
| 1 pin wrench           | 100.110 |

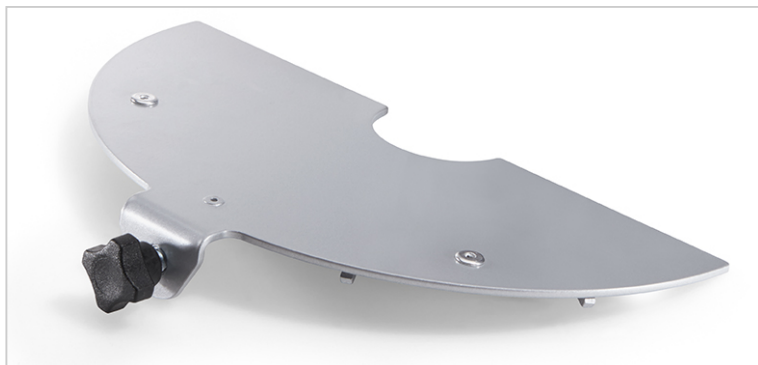
### 2100 watt angle grinder, 180 mm

- + Robust motor housing and gearbox housing. Stable and robust steel gearbox as well as a spindle bearing protected by a metal cap also increase reliability and durability
- + Ergonomically designed and very slim motor housing provides optimum guidance and handling. An additional vibration damping ring between the motor housing and rear handle reduces the vibrations
- + SoftVib handgrip for reduced vibration can be mounted in three positions.
- + Rear shaft handle with soft padding for secure grip
- + Switch: with lock-off / lock-on switch
- + Restart protection after power interruption
- + Soft-start: for a soft start without power overloading
- + Spindle lock
- + Tool-free adjustment of safety guard
- + Disc guard cover for cutting guard (446.718), as an optional accessory

## Accessories

### Disc guard cover

Order number 446.718



For tool-free conversion of the existing guard for cutting work.

#### Technical attributes

|                |     |
|----------------|-----|
| Diameter in mm | 180 |
| QTY/PKG        | 1   |

### Carrying case

Order number 444.391



#### Technical attributes

|         |        |
|---------|--------|
| Weight  | 4,0 kg |
| QTY/PKG | 1      |

Impact-resistant plastic box with insert for large angle grinders (up to  $\varnothing$  230), and renovation grinders LD 18-7 125 R / 150 R, LD 24-6 180. Includes holder for handle, disk up to  $\varnothing$  230 mm and transparent lidded compartment DIN A5.

## Accessories

### SDS-Clic quick-clamp nut

Order number 253.049



For tool-less disc change suitable for discs from  $\varnothing$  150-230 mm.

#### Technical attributes

|         |   |
|---------|---|
| QTY/PKG | 1 |
|---------|---|

### SoftVib side handle

Order number 325.384



SoftVib handle with vibration cushioning, significantly reducing the vibration transmitted to hands and arms and moderating the risk of vibration-related injury to the operator.

#### Technical attributes

|         |      |
|---------|------|
| Type    | M 14 |
| QTY/PKG | 1    |

FLEX-Elektrowerkzeuge GmbH  
Bahnhofstraße 15  
71711 Steinheim  
Phone +49 7144 828-0  
Fax +49 7144 25899  
info@flex-tools.com  
www.flex-tools.com

# FLEX

## Accessories

### Elastic support plate with clamping nut M 14

Order number 124.079



Backing pads for 180 mm fiber grinding discs.

#### Technical attributes

|                  |       |
|------------------|-------|
| Dimensions in mm | 180 Ø |
| QTY/PKG          | 1     |